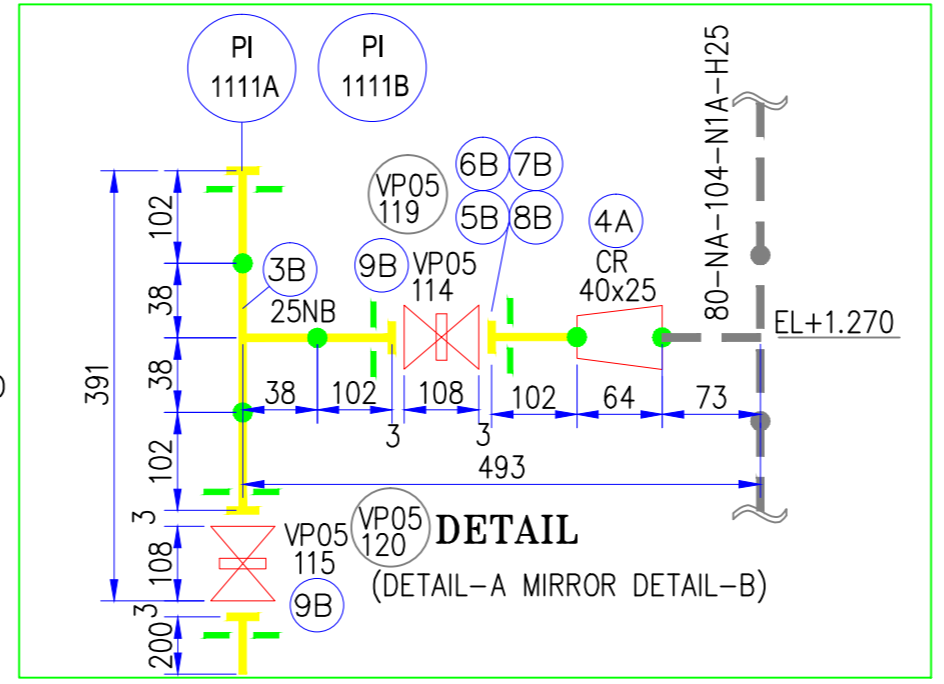


- NOTES: -
1. ALL DIMENSIONS ARE IN mm UNLESS OTHERWISE SPECIFIED
  2. ALL ELEVATIONS ARE IN METRES
  3. FOR GENERAL ARRANGEMENT OF PIPING LAYOUT REFER DRAWING NO: PC-19442-1 SHEET 1 TO 5
  4. FOR P & I DIAGRAM PC-19428-0

\* INCASE OF PREFABRICATION SUITABLE SITE ADJUSTMENT PROVISIONS SHALL BE MADE.



ITEM	PART NO.	NB	OD	SCH. THICKNESS	MM	CLASS	SPECIFICATION STANDARD	QTY. (m)	REMARKS
VALVE	9B	25					VP05-134,114,115,119,120,122A	6	
	9A	80					VP05 - 117,122,131,132,133	5	
	9	80					VC17 - 121,116	2	
STUDS & NUTS	8B	25					1/2" x 3 1/2"	56	SA 193 Gr.B7/
	8A	40					1/2" x 3 3/4"	8	SA 194 Gr.2H
	8	80					5/8" x 4"	56	ANSI B 18.2.1& 2.2
GASKETS	7B	25						14	SELF-CENTERING FLAT RING, VIRGIN PTFE 3mm thk. ANSI B 16.21
	7A	40						2	
	7	80						14	
STUB END	6B	25						14	LONG PATTERN,BUTT WELD END
	6A	40						2	ASTM B 366 Gr. WPN UNS-NO 2200
	6	80						12	ANSI B 16.9
FLANGES	5B	25				150#		14	FORGED CS LAP JOINT SUITABLE FOR NICKLE
	5A	40						2	STUB ENDS
	5	80						12	ASTM A 105 ANSI B16.5 Cl.150
REDUCER	4C	80x50					CON.REDUCER	1	BUTT WELD ENDS
	4B	40x25					ECC.REDUCER	1	ASTM B366 Gr. WPN
	4A	40x25					CON.REDUCER	3	UNS-NO 2200
	4	80x40					CON.REDUCER	2	ANSI B 16.9
TEES	3B	25x25					EQUAL TEE	2	BUTT WELD ENDS
	3A	80x40					UN EQUAL TEE	4	ASTM B366 Gr. WPN
	3	80x80					EQUAL TEE	4	UNS-NO 2200
ELBOWS	2B	25					90° ELBOW	1	LONG RADIUS=1.5D
	2A	40					90° ELBOW	1	BUTT WELD ENDS
	2	80					90° ELBOW	6	ASTM B366 Gr. WPN
PIPE	1A	25						2.0	ASTM B 161 ALLOY 200, (UNS N02200)
	1	80						22.0	ANSI B36.19

BILL OF MATERIAL

**Protech Consultants Pvt. Ltd.,**  
 OFFICE: 173. T.T.K ROAD ALWARPET CHENNAI-600 018

PIPING ISOMETRIC FOR NICKEL